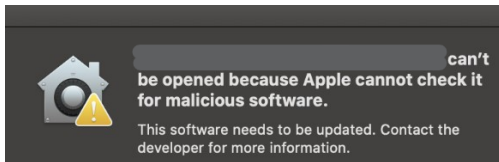


Please follow these steps to install the Sena Device Manager on MacOS 10.15 Catalina:

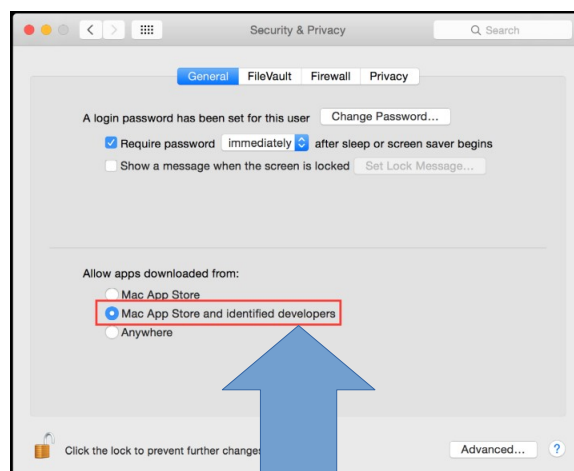
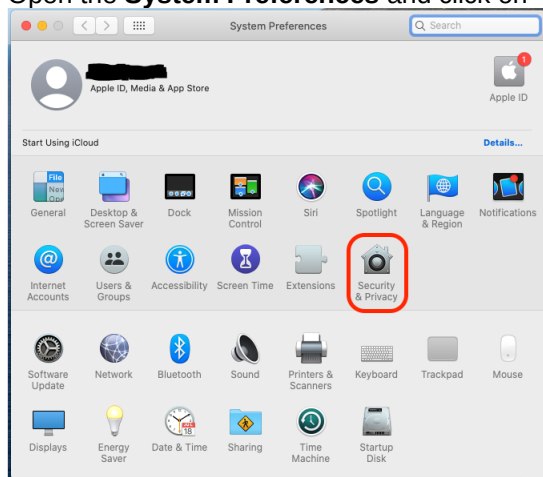
1. You can do the update of your device with our SENA Device Manager.
Please download it at the following link and install the program on your computer:

SENA Device Manager

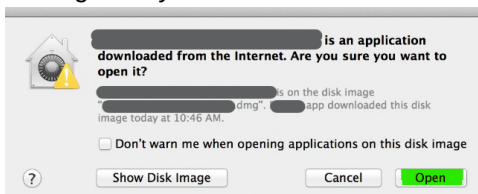
2. When the downloaded file is opened, you will receive this Error message.



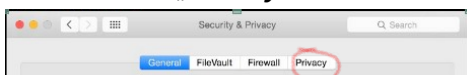
3. Open the **System Preferences** and click on **"Security & Privacy"**.



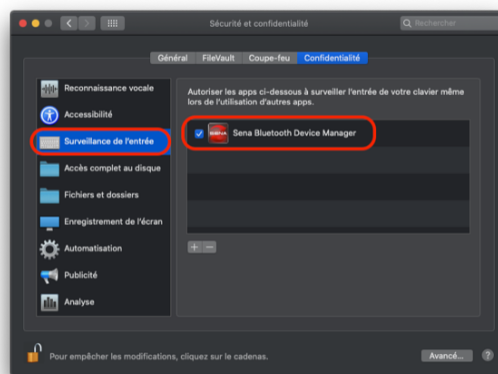
4. In the bottom left, click the lock icon.
5. Enter the password for your Mac.
6. Make sure that the option for **"App Store and identified developers"** is selected under **Allow apps downloaded from**.
7. Please install the SENA Device Manager now.
When you receive this message, click on the **Open** button to properly install the Sena Device Manager for your Mac.



8. Open the **"Security & Privacy"** page again.
Click onto the **"Privacy"**-tab



9. Click onto 3-**"Input monitoring"**
please activate the checkbox next to the **SENA device Manager** to allow the Application access to the USB port for device recognition.



We recommend reverting your security settings after installation of the software is complete.