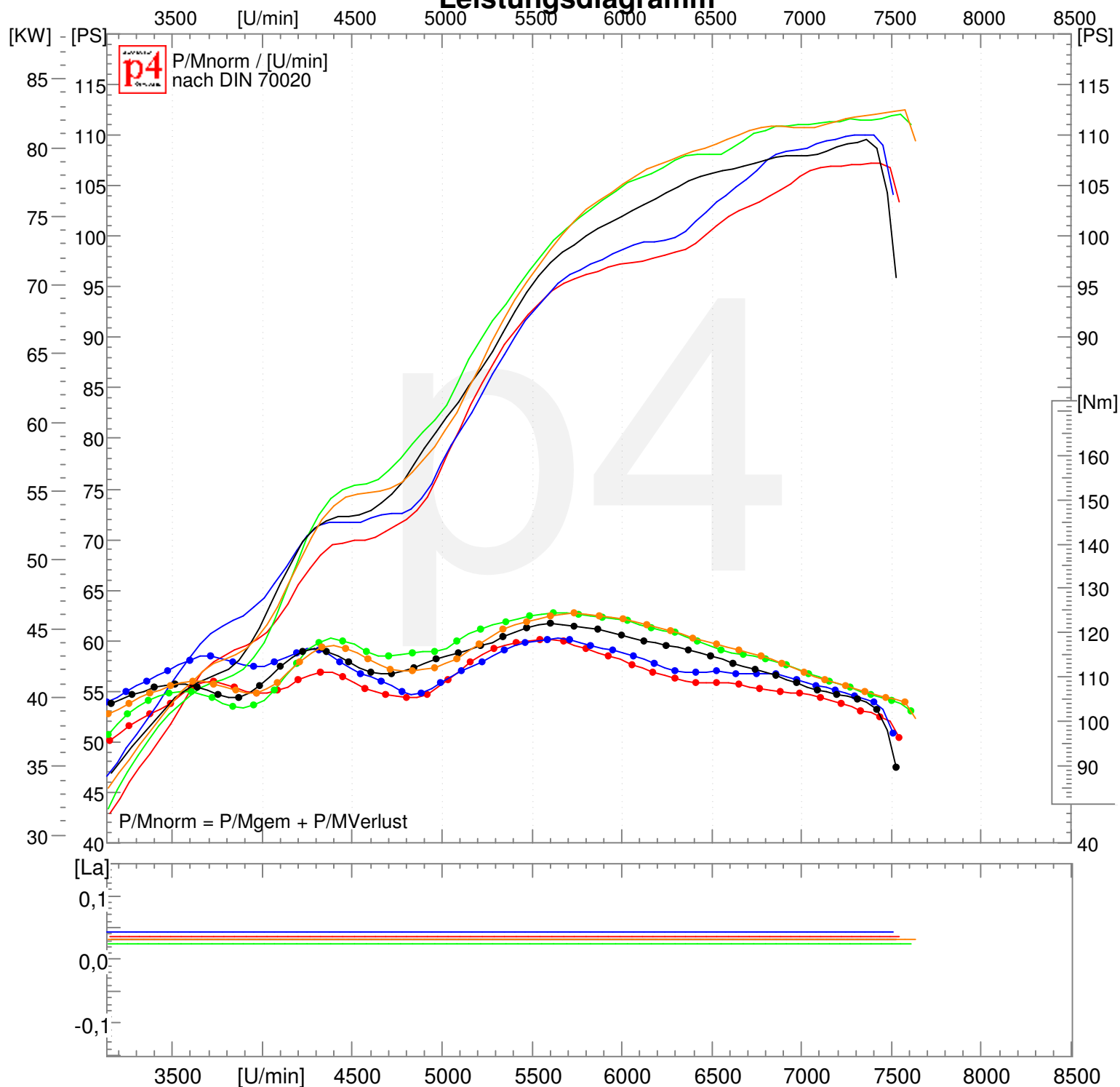


## Leistungsdigramm



325 BMW R 1200 GS  
14.04.2007 11:47 78.9 KW/7438 1/min | 107.2 PS/7438 1/min | 118.5 Nm/5609 1/min | vmax: 206.4 km/h  
k=1,041 (26°C/32%/983mbar)  
PAF-XX 51 Eingang

330 BMW R 1200 GS  
14.04.2007 12:29 81.0 KW/7403 1/min | 110.1 PS/7403 1/min | 118.7 Nm/5647 1/min | vmax: 210.7 km/h  
k=1,045 (29°C/27%/984mbar)  
PAF-XX 51 SR V-Rohr mit Dämpfer2107

444 BMW R 1200 GS  
02.06.2007 10:58 82.4 KW/7553 1/min | 112.1 PS/7553 1/min | 124.4 Nm/5623 1/min | vmax: 209.4 km/h  
k=1,026 (17°C/70%/982mbar)  
Paf-XX-51 SR - komplett-Anlage

517 BMW R 1200 GS  
21.07.2007 08:59 80.6 KW/7364 1/min | 109.5 PS/7364 1/min | 122.0 Nm/5605 1/min | vmax: 209.2 km/h  
k=1,022 (23°C/62%/996mbar)  
PAF-XX 51 SR-Racing Doppelrohranlage

**Leistungsdiagramm**

518

BMW R 1200 GS

21.07.2007 09:03 82.7 KW/7575 1/min | 112.5 PS/7575 1/min | 124.3 Nm/5737 1/min | vmax: 210.0 km/h  
k=1,022 (23°C/64%/996mbar)  
PAF-XX 51 SR-Racing Doppelrohranlage